



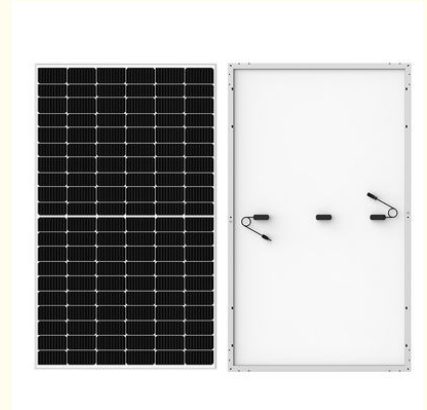
430W 460w High Efficiency Monocrystalline Solar Cells Mono Cell Solar Panel 6 X 20 Cell

Our Product Introduction

for more products please visit us on monosolarpanel.com

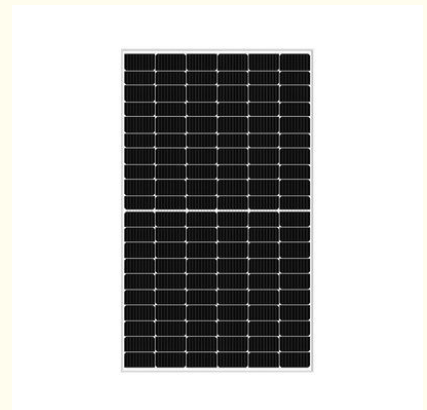
Basic Information

- Place of Origin: China
- Brand Name: Linksun
- Certification: CE
- Model Number: LS-430-460M-120
- Minimum Order Quantity: 100PCS
- Packaging Details: 1pcs/carton
- Delivery Time: 5-8days
- Payment Terms: 30% TT in advance, 70% balance before delivery.
- Supply Ability: 1000pieces per week



Product Specification

- Product Name: Mono Solar Panel
- Solar Cell: Monocrystalline Silicon Solar Cell
- Application: RV, Boat And Yacht, Van
- Contract Dimension: 1910*1134*35mm(75.20x44.65x1.38 Inches)
- Benefits: Durable, Convenient, Waterproof
- Warranty: 5 Years
- Protection Class: IP68 Rated
- Front Material: 3.2mm High Transmission Tempered Glass(0.13 Inches)
- Output Cables: 4.0 Mm²(0.006 Inches²), Length: 1100mm
- Highlight: **430W high efficiency monocrystalline solar cells**
 ,
460w high efficiency monocrystalline solar cells
 , mono cell solar panel 6 x 20 cell



More Images



430W 460w High Efficiency Monocrystalline Solar Cells Mono Cell Solar Panel 6 X 20 Cell

This high-efficiency monocrystalline solar panel, available in 430W and 460W options. Engineered with advanced technology, it ensures optimal performance and durability, making it ideal for residential, commercial, and industrial applications. Its sleek design and robust construction offer reliable energy solutions, maximizing space and energy efficiency while reducing carbon footprint. Perfect for those seeking sustainable and cost-effective energy alternatives.

Product Features:

1) High photoelectric conversion efficiency:

The photoelectric conversion efficiency of monocrystalline silicon solar cells is about 15%, with the highest reaching 24%, which is currently the highest photoelectric conversion efficiency among all types of solar cells.

2) Low production cost:

The production cost of monocrystalline silicon solar cells is relatively low, and the technology is already very mature, so it has been widely used.

3) Long service life:

The service life of monocrystalline silicon solar cells is relatively long, generally reaching around 20 years, with the highest reaching 25 years.

4) Good low light performance:

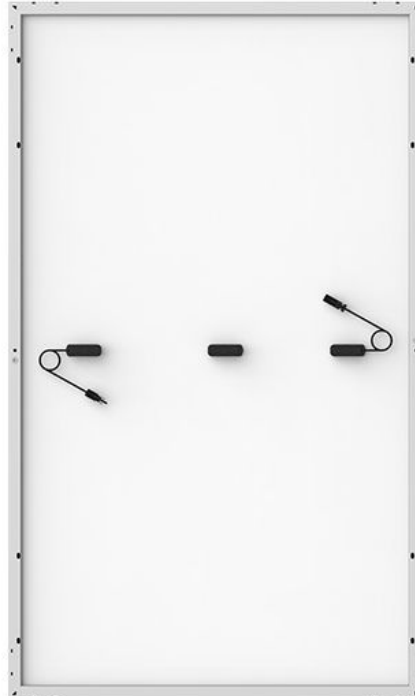
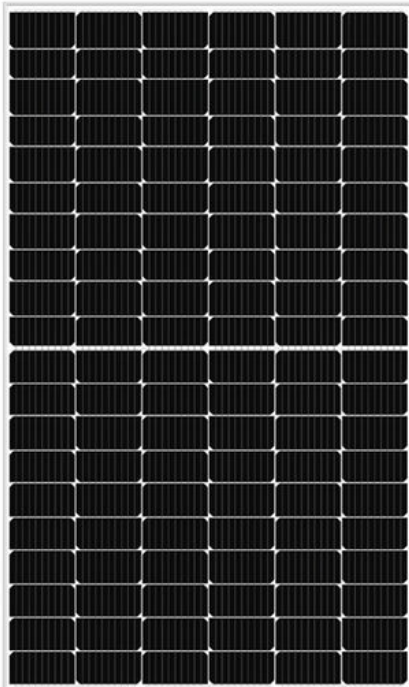
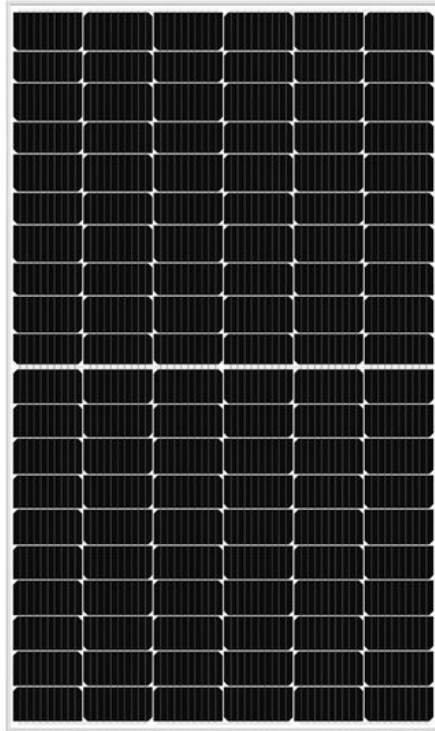
Monocrystalline silicon solar cells can also perform well under low light conditions, making them suitable for use in solar lamps, solar lawn lamps, etc.

5) Strong radiation resistance:

Monocrystalline silicon solar cells have strong radiation resistance, which can resist radiation such as ultraviolet and infrared rays.

Product Details:

Model	LS-430M	LS-435M	LS-440M	LS-445M	LS-450M	LS-455M	LS-460M
Maximum Power(Pmax)	430W	435W	440W	445W	450W	455W	460W
Maximum Power Voltage(Vmp)	33.82V	34.07V	34.32V	34.56V	34.81V	35.06V	35.31V
Maximum Power Current(Imp)	12.71A	12.77A	12.83A	12.88A	12.93A	12.98A	13.03A
Open-Circuit Voltage(Voc)	40.5V	40.80V	41.10V	41.30V	41.50V	41.70V	41.90V
Short-Circuit Current(Isc)	13.5A	13.55A	13.60A	13.65A	13.70A	13.75A	13.80A
Power Tolerance(Positive)	0-+3%						
Module Efficiency STC	19.85%	20.08%	20.31%	20.55%	20.78%	21.01%	21.24%
Operating Temperature Range	-40°C - 85°C						
Maximum System Voltage	DC 1500V						
Cell Type	Mono-crystalline PERC,182x91mm						
Cell number	120(6x20)(Half-Cell)						
Product Dimension(mm)	1910*1134*35mm(75.20x44.65x1.38 inches)						
Weight(kgs)	23.5kg						
Front Glass	3.2mm High Transmission Tempered Glass(0.13 inches)						
Frame Type	Silver/Black,Anodized Aluminum Alloy						
Protection Class	IP68 rated						
Connector Type	MC4						
Output Cables	4.0 mm ² (0.006 inches ²),Length:1100mm						
Temperature Characteristics				Packing Configuration			
Temp.Coeff.of Isc(TK Isc)	0.05%/			Container	40'HQ		
Temp.Coeff.of Voc(TK Voc)	-0.29%/			Pieces per pallet	62		
Temp.Coeff.of Pmax(TK Pmax)	-0.34%/			Pallets per container	12		
Normal operating cell Temperature	44±2			Pieces per container	744		



FAQ:

Q1:What's the solar panels warranty?

A: 5 year's warranty.If you have any questions about our quality during use,you can contact us at any time.

Q2:Do you accept OEM/ODM orders?

A:We accept OEM/ODM orders.Welcome your inquiry.

Q3:Can I have samples to test?and what's the lead time for the sample order?

A:Yes,of course.The lead time for samples is 7-10 days.

Q4:Are you manufacturer or a trading company?

A:We are manufacturer and our factory is based in Yuyao,Ningbo.Welcome your visit if you like.

Q5:Where are your goods exported?

A:We can export to all over the world.



Ningbo Linksun Energy Science & Technology Co., LTD



+8615888168085



sales02@zjlinksun.com



monosolarpanel.com

2nd ,Floor,No.1 Building,Wanyang Entrepreneurial City,Yuyao,Zhejiang Province, China