



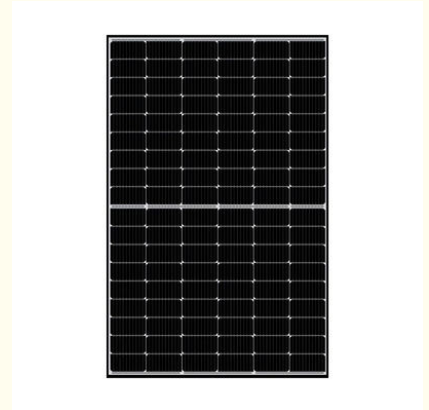
## 390W Mono Solar Panel Solar Monocrystalline Panels 1722 X 1134 X 30mm

Our Product Introduction

for more products please visit us on [monosolarpanel.com](http://monosolarpanel.com)

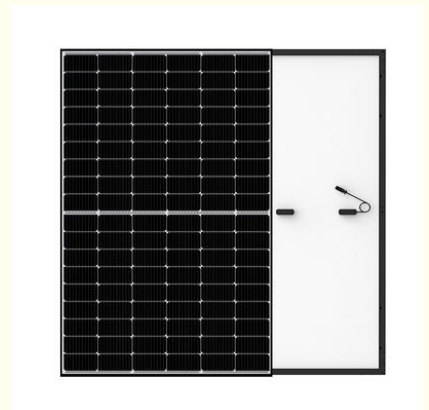
### Basic Information

- Place of Origin: China
- Brand Name: Linksun
- Certification: CE
- Model Number: LS-390-415M-108
- Minimum Order Quantity: 100PCS
- Packaging Details: 1pcs/carton
- Delivery Time: 5-8days
- Payment Terms: 30% TT in advance, 70% balance before delivery.
- Supply Ability: 1000pieces per week



### Product Specification

- Product Name: Mono Solar Panel
- Solar Cell: Monocrystalline Silicon Solar Cell
- Application: RV, Boat And Yacht
- Contract Dimension: 1722\*1134\*30mm(67.79x44.64x1.18 Inches)
- Benefits: Durable, Convenient, Waterproof
- Warranty: 5 Years
- Protection Class: IP68 Rated
- Front Material: 3.2mm High Transmission Tempered Glass(0.13 Inches)
- Output Cables: 4.0 Mm<sup>2</sup>(0.006 Inches<sup>2</sup>), Length: 1100mm
- Highlight: **390W Mono Solar Panel, 415w Mono Solar Panel**  
**solar monocrystalline panels 1722 X 1134 X 30mm**



### More Images



## Product Description

### 390W Mono Solar Panel Solar Monocrystalline Panels 1722 X 1134 X 30mm

**1) High photoelectric conversion efficiency:**

The photoelectric conversion efficiency of monocrystalline silicon solar cells is about 15%, with the highest reaching 24%, which is currently the highest photoelectric conversion efficiency among all types of solar cells.

**2)Low production cost:**

The production cost of monocrystalline silicon solar cells is relatively low, and the technology is already very mature, so it has been widely used.

**3)Long service life:**

The service life of monocrystalline silicon solar cells is relatively long, generally reaching around 20 years, with the highest reaching 25 years.

**4)Good low light performance:**

Monocrystalline silicon solar cells can also perform well under low light conditions, making them suitable for use in solar lamps, solar lawn lamps, etc.

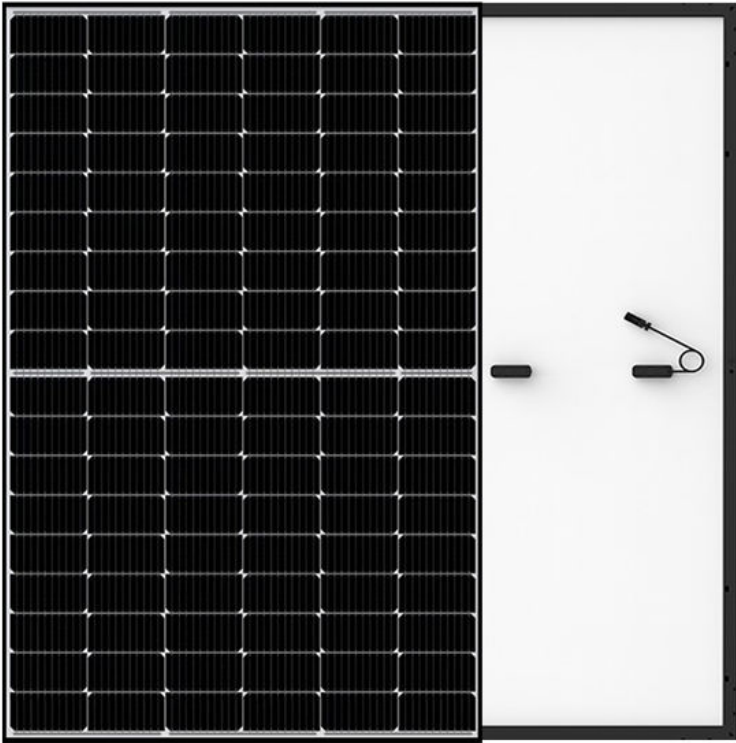
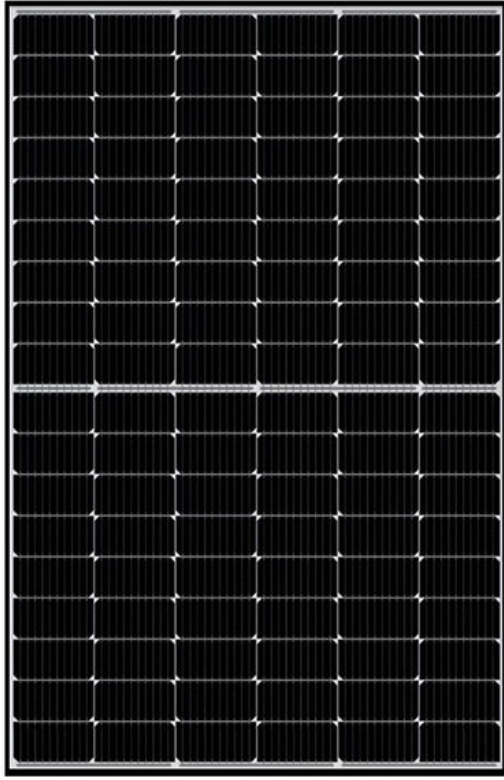
**5)Strong radiation resistance:**

Monocrystalline silicon solar cells have strong radiation resistance, which can resist radiation such as ultraviolet and infrared rays.

**Product Details:**

Model	LS-390M	LS-395M	LS-400M	LS-405M	LS-410M	LS-415M
Maximum Power(Pmax)	390W	395W	400W	405W	410W	415W
Maximum Power Voltage(Vmp)	30.41V	30.62V	30.83V	31.04V	31.25V	31.47V
Maximum Power Current(Imp)	12.83A	12.90A	12.98A	13.05A	13.12A	13.19A
Open-Circuit Voltage(Voc)	36.53V	36.73V	36.93V	37.13V	37.33V	37.53V
Short-Circuit Current(Isc)	13.62A	13.69A	13.76A	13.83A	13.90A	13.97A
Power Tolerance(Positive)	0-+3%					
Module Efficiency STC	19.9%	20.20%	20.46%	20.72%	20.97%	21.23%
Operating Temperature Range	-40°C - 85°C					
Maximum System Voltage	DC 1500V					
Cell Type	Mono-crystalline PERC,182x91mm					
Cell number	108(6x18)(Half-Cell)					
Product Dimension(mm)	1722*1134*30mm(67.79x44.64x1.18 inches)					
Weight(kgs)	21.5kg					
Front Glass	3.2mm High Transmission Tempered Glass(0.13 inches)					
Frame Type	Silver,Anodized Aluminum Alloy					
Protection Class	IP68 rated					
Connector Type	MC4					
Output Cables	4.0 mm <sup>2</sup> (0.006 inches <sup>2</sup> ),Length:1100mm					

Temperature Characteristics		Packing Configuration	
Temp.Coeff.of Isc(TK Isc)	0.048%/	Container	40'HQ
Temp.Coeff.of Voc(TK Voc)	-0.27%/	Pieces per pallet	72
Temp.Coeff.of Pmax(TK Pmax)	-0.34%/	Pallets per container	13
Normal operating cell Temperature	44±2	Pieces per container	936





#### FAQ:

Q1:What's the solar panels warranty?

A: 5 year's warranty.If you have any questions about our quality during use,you can contact us at any time.

Q2:Do you accept OEM/ODM orders?

A:We accept OEM/ODM orders.Welcome your inquiry.

Q3:Can I have samples to test?and what's the lead time for the sample order?

A:Yes,of course.The lead time for samples is 7-10 days.

Q4:Are you manufacturer or a trading company?

A:We are manufacturer and our factory is based in Yuyao,Ningbo.Welcome your visit if you like.

Q5:How can we guarantee quality?

A:We always prepare a sample production before bulk production and have a final strict inspection before shipment.



**Ningbo Linksun Energy Science & Technology Co., LTD**



+8615888168085



sales02@zjlinksun.com



monosolarpanel.com

2nd ,Floor,No.1 Building,Wanyang Entrepreneurial City,Yuyao,Zhejiang Province, China